



McWHORTER SCHOOL
OF BUILDING SCIENCE

KING'S PARK PAVILION

PROJECT TEAM

- Parker Orlowski - Project Manager
- Calvin Nowell - Project Manager
- Carter Bouwens - Superintendent
- Sam Calligaris - Superintendent
- Jacob Rowell - Quality control
- Alex Sunas - Quality control
- Ian Sorrels - Safety
- Parker Deaton - Safety
- Cayden Marsh - Operator
- Ezra Burks - Estimator
- Judson Wall – Scheduler

ABOUT HOLY TRINITY EPISCOPAL CHURCH

History: Holy Trinity parish originally moved to Auburn, Alabama in 1958 and their current 'central part of the Church' was built in 1998.

Core Values: Gospel Formation, Beautiful Worship, Radical Hospitality, Relational Mission, and Sacrificial Giving.

OUR MISSION

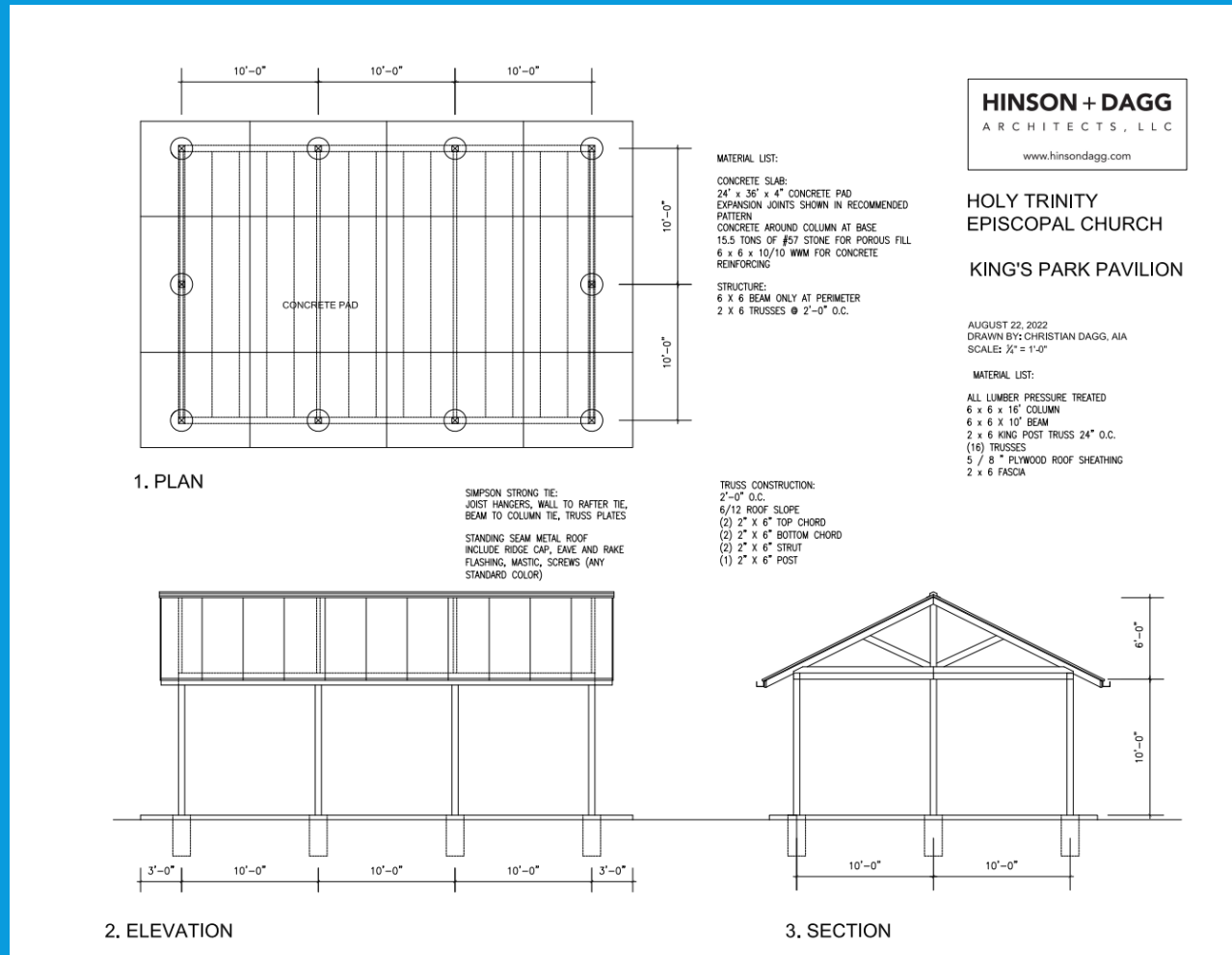


To provide the Kings Park community with a pavilion to be able to meet, gather, and have local events at.



To build relationships with the people, and get a better understanding of how this pavilion will benefit everybody.

OUR SCOPE OF WORK



Phase 1

- Column Footings
- 6x6 Columns
- 6x6 Structure Frame
- Roof Trusses and Rafters
- Perlines
- Metal Roof

Phase 2 (not our scope)

- Slab on Grade
- Construct tables

SCHEDULE

Schedule

Week 1 - September 5, 2022

Planning & Phasing

Week 2 - September 12, 2022

Layout & Auger Column Footings

Week 3 - September 19, 2022

Set & Plumb 6x6 Columns

Week 4 - September 26, 2022

Finish Setting 6x6 Columns

Week 5 - October 3, 2022

Set Beams with Gusset Plates

Week 6- October 10, 2022

Begin Truss Construction

Week 7- October 17, 2022

Finish Truss Construction

Week 8- October 24, 2022

Begin Setting Rafters

Week 9- October 31, 2022

Finish Rafters and Begin Purlins

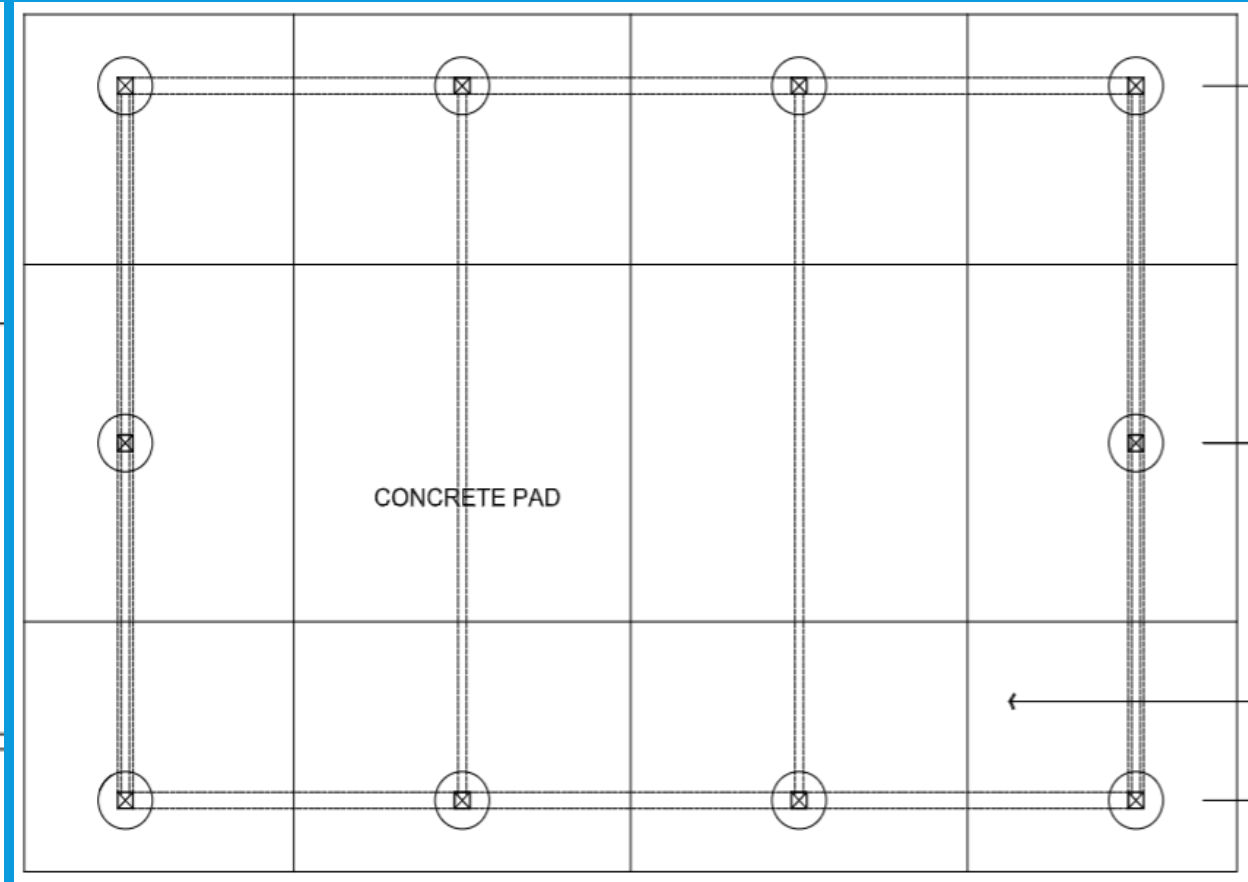
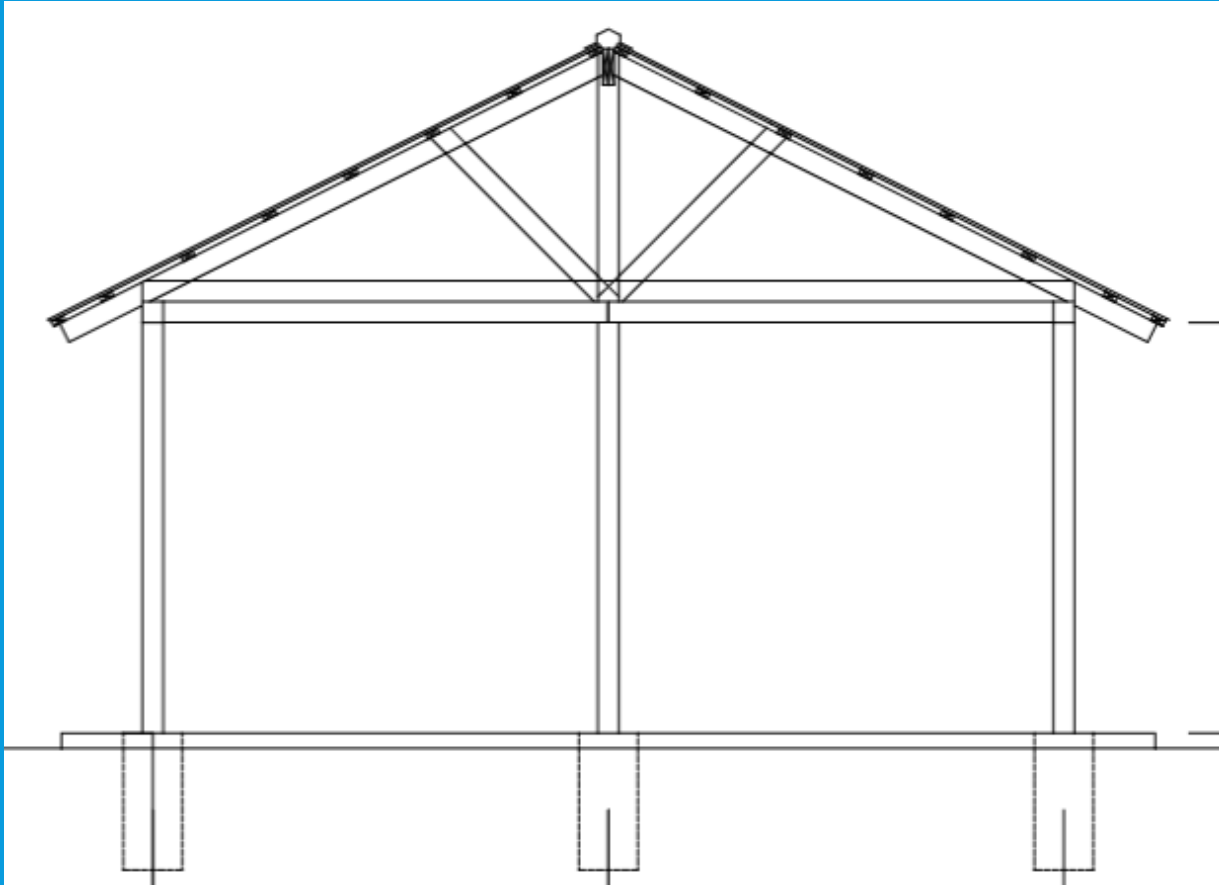
Week 10 -November 7, 2022

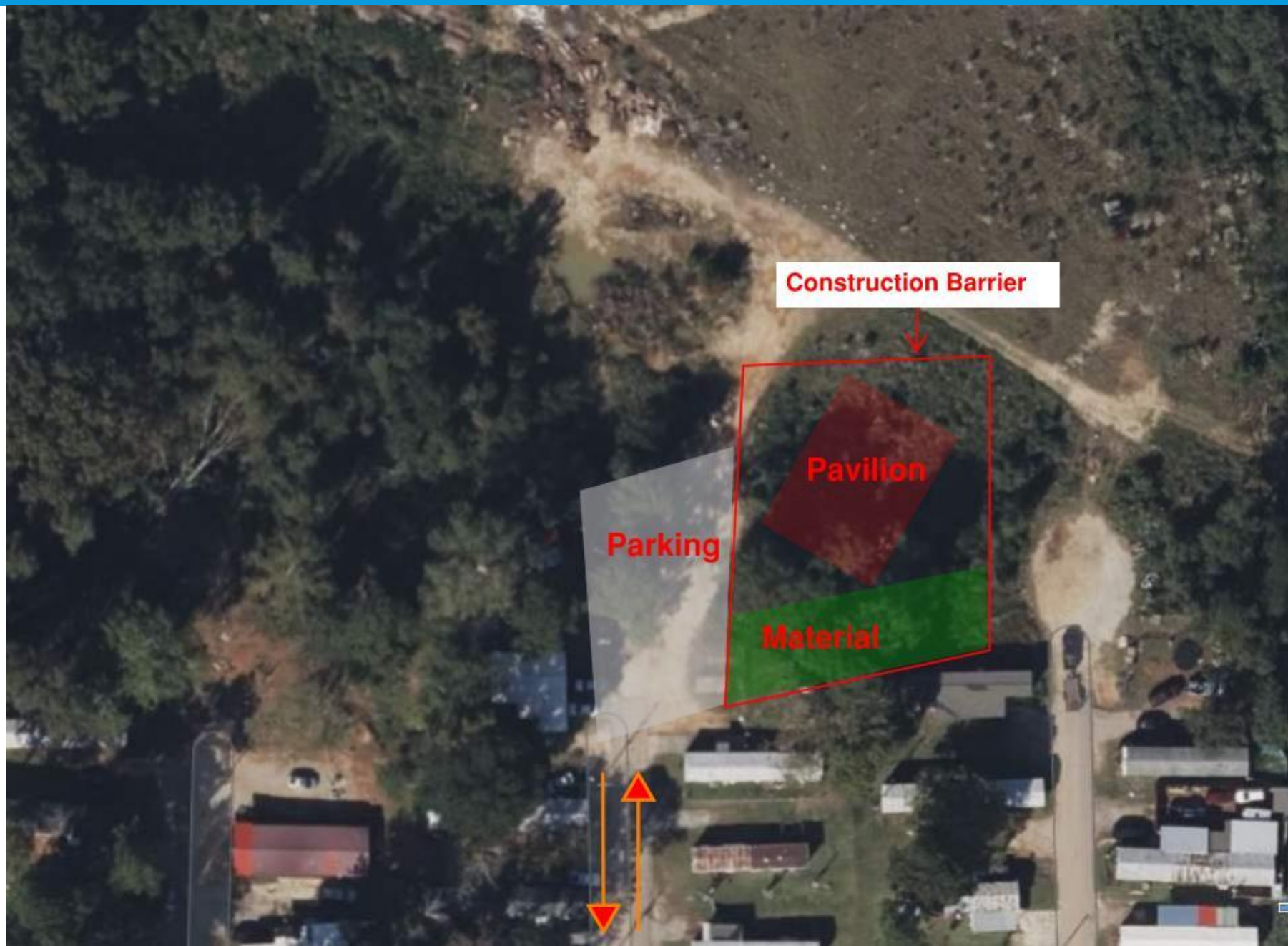
Finish Purlins

King's Pavilion Lumber			
Product	Quantity		
6x6x16	12		
6x6x12	10		
2x6x16	40		
2x8x20	4		
2x6x8	12		
2x8x16	2		
2x4x16	54		
Total for Pressure Treated	134	\$3,246	
King's Pavilion Accessories			
Product	Quantity	Price per unit	Total
Framing Nails 4000 ct	1	\$115	\$115
Framing Screws 1000 ct	1	\$300	\$300
Gusset Plate	20	\$15	\$300
Simpson Steel T-strap	8	\$30	\$240
Carriage Bolts for Beams + nut/washers	1	\$250	\$250
Hanger/ Plate Fasteners Allowance	1	\$250	\$250
Hurricane Ties	24	\$1	\$24
Quikrete 80 lb bags	103	\$8	\$773
Equipment Rental	1	\$200	\$200
Total			\$2,452
Overall Total			\$5,698

ESTIMATE

FOR REFERENCE





SAFETY

PPE:

- Hard Hats for overhead work, Gloves when needed, Eye Protection, Boots, long pants

Security:

- Chain or Snow Fence, Cameras(cameras provided by king's park)

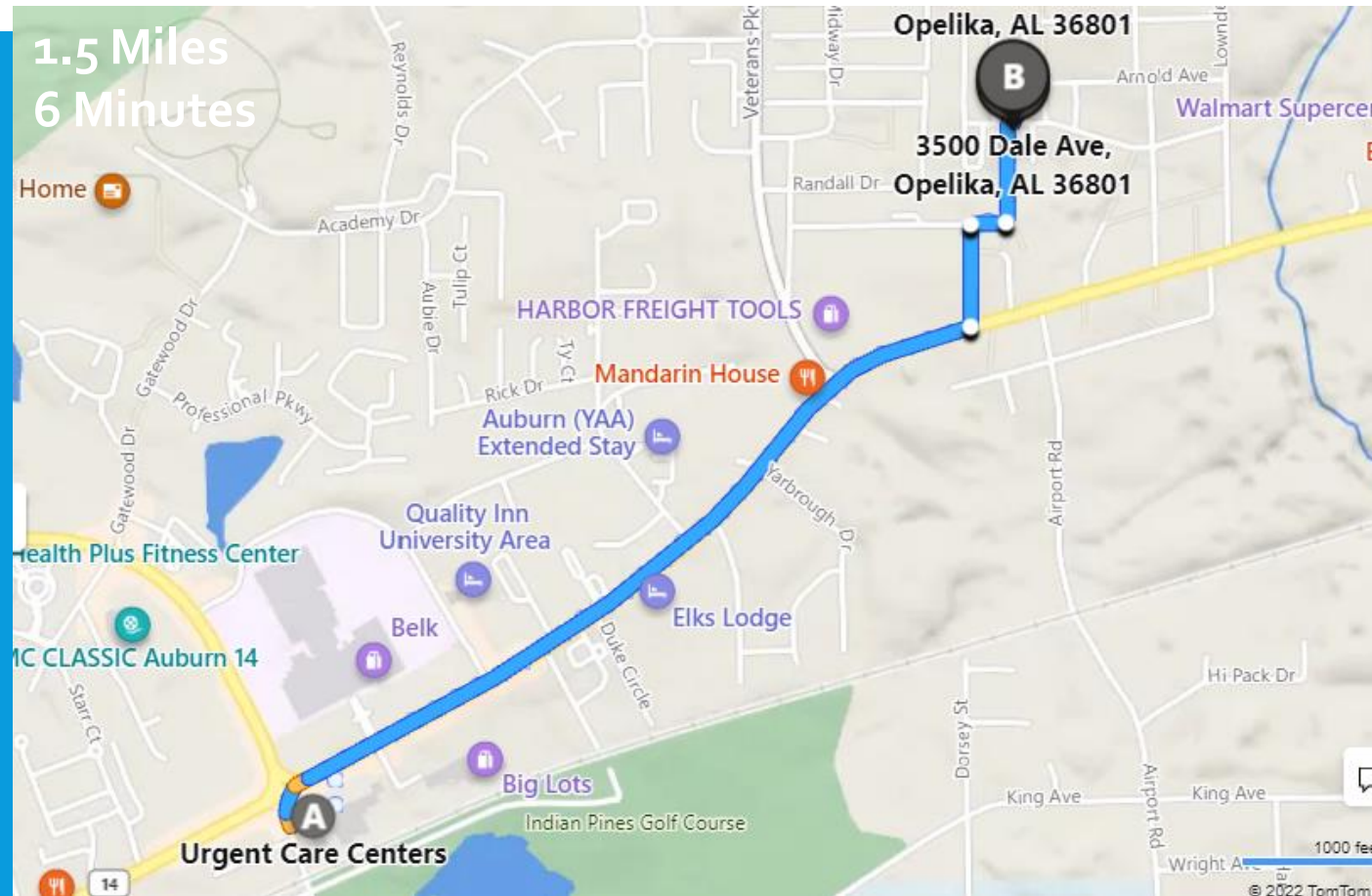
Operational:

- Footing Holes- Keep holes covered unless in operation

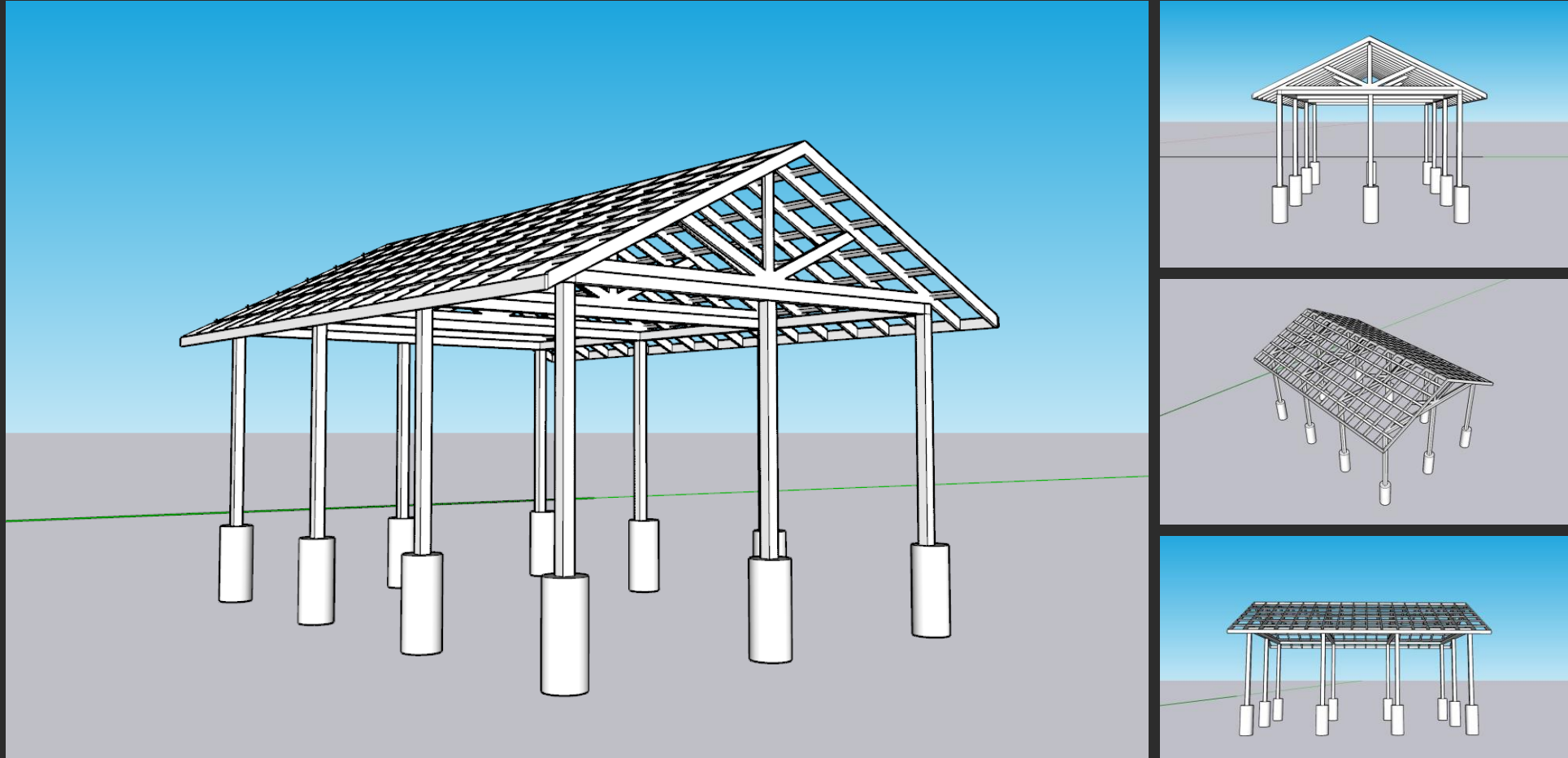
Possible Risks:

- Fall Risk- Ladders, Man Lifts
 - Person must be tied off above 6' with the exception of ladders
- Struck By Risk- dropped tools and material
 - Overhead work area must be roped off
- Power Tools

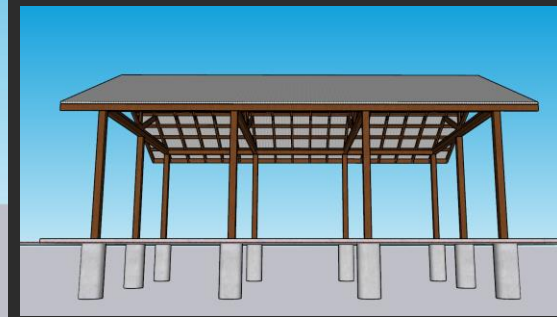
ROUTE TO CLOSEST URGENT CARE



BIM MODEL: OUR SCOPE OF WORK



BIM MODEL: FINAL PRODUCT



QUESTIONS?

